

Schematic Design

Our goal at Animal Arts is to help people provide exemplary care for animals. To accomplish this, we work with our clients from the very beginning stages of the design process to ensure that the facility we design represents your philosophy and goals and is the most efficient and effective facility possible.

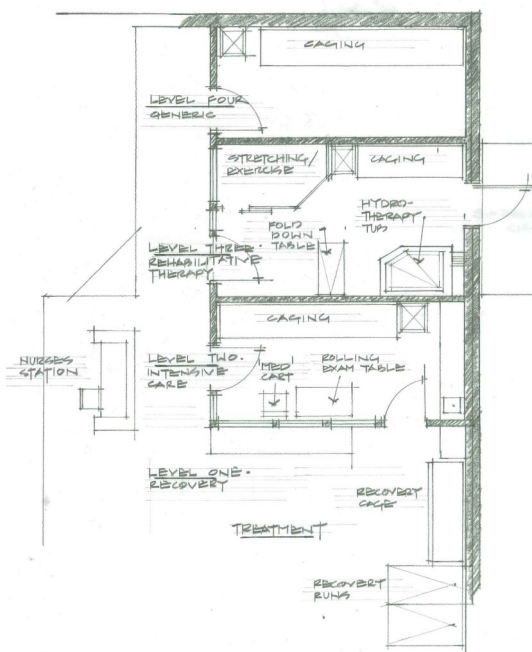
The Schematics

The first step in the design process is schematic design. The Schematics are the drawings that determine how your proposed facility will lay out and what it will look like. The Schematics show the rooms, including their sizes, Locations, and adjacencies, as well as the placement of doors, windows, cabinets, cages, furniture, and equipment. Most importantly, they show you the overall configuration of your proposed facility, and by “walking through” it, you will be able to visualize the traffic patterns, the storage spaces and the workability of your new space.

Creating the floor plan is an interactive process. To begin, we will engage you in an in-depth conversation to discuss your needs, how you practice and what is important to you. From this conversation we will develop a listing of spaces, a realistic budget and the Schematic floor plan. Once you have had the opportunity to review this information, we will make any necessary revisions.

Next, we will work with you on the exterior look of the building, going through the same process as before. When the Schematics are complete, you will have a preliminary set of drawings depicting your building, inside and out. The Schematics can be submitted to the planning or zoning board for initial review and/or to a contractor to develop an initial ballpark price for the project, but they are not developed enough to be used for permitting or construction (that step comes next).

The Schematics cost approximately \$2.00 per square foot of building area and can usually be completed in three to six weeks from the initial kick-off date.



To the left is an example of a portion of a Schematic Design floor plan.

4520 Broadway, Suite E
Boulder, CO 80304

800.332.4413

www.animalarts.com

ANIMAL ARTS

architecture • animals • people